

## KM 70/20 C 2SB

Optimum cleaning results inside and out: the KM 70/20 C 2SB manual sweeper with 2 side brushes ensures extensive area performance and virtually dust-free sweeping.



**Order no.** 1.517-131.0

- Roller brush driven by both wheels
- Push handle adjustable in 3 positions
- Roller brush and side brushes continuously adjustable

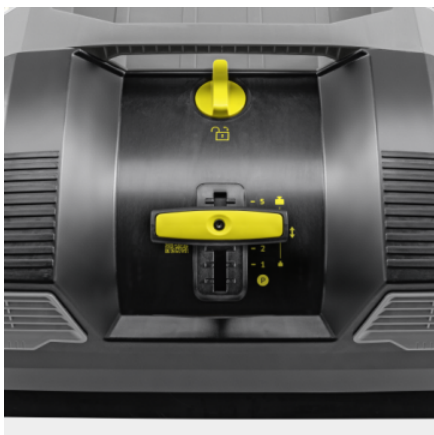
### Technical data

<b>EAN code</b>		4054278809519
<b>Drive type</b>		manual
<b>Max. area performance</b>	<b>m<sup>2</sup>/h</b>	3920
<b>Working width</b>	<b>mm</b>	480
<b>Working width with 1 side brush</b>	<b>mm</b>	700
<b>Working width with two side brushes</b>	<b>mm</b>	980
<b>Tank volume, gross/net</b>	<b>l</b>	45 / 20
<b>Weight (with accessories)</b>	<b>kg</b>	22
<b>Weight, ready to uset</b>	<b>kg</b>	22
<b>Package weight</b>	<b>kg</b>	27.5

### Equipment

<b>Fine dust filter</b>	■
<b>Sweeper drive, manual</b>	■
<b>Main sweeper roller adjustable</b>	■
<b>Foldable push handle</b>	■
<b>Dustpan principle</b>	■
<b>Outdoor use</b>	■
<b>Indoor use</b>	■

■ Included in the scope of supply.



## Roller brush and side brushes continuously adjustable

- Incrementally adjustable contact pressure for optimum sweeping results.
- Adjusting the contact pressure reduces sweeper roller wear.
- To protect the bristles, the sweeper roller and side brush can be completely relieved of load.



## Dust filter

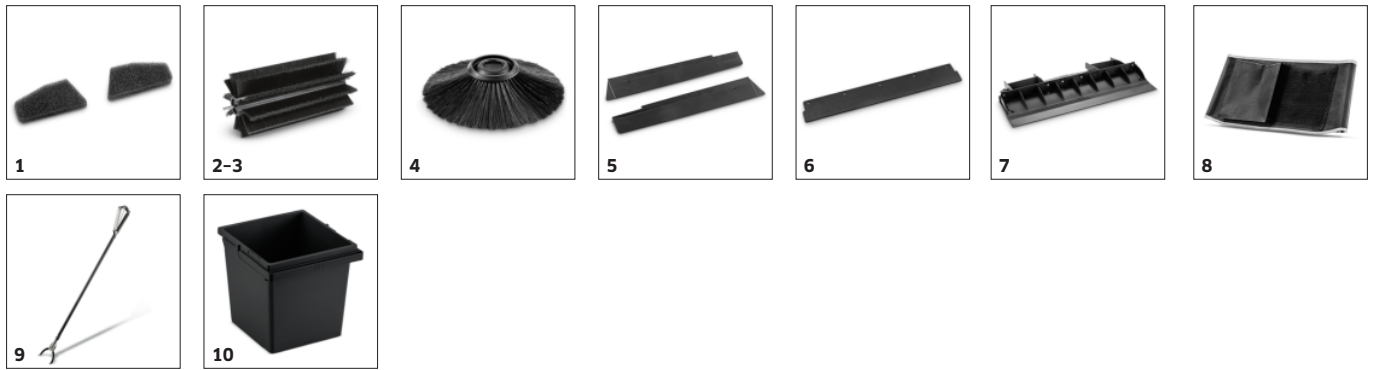
- The dust filter cleans the exhaust air effectively and prevents dust from flying up during sweeping.
- The filter system is easily accessible for quick and easy replacement.



## Home Base system

- Convenient storage of additional equipment such as buckets and litter pickers.
- Accessories can be kept handy in a pocket on the push handle.

## ACCESSORIES FOR KM 70/20 C 2SB 1.517-131.0



		Order no.	Description	
<b>FILTERS</b>				
<b>Foam filter</b>				
Set filter	1	2.644-435.0	Plastic filter, water-resistant, washable, reduces maintenance costs.	■
<b>MAIN SWEEPER ROLLER</b>				
<b>Standard roller brush</b>				
Reversing rolling mill standard KM70/20	2	6.907-783.0	Tough standard roller brush with moisture-proof universal bristles for normal soiling on all surfaces. Extremely durable.	■
<b>Main sweeper roller, hard</b>				
Main sweeper roller, hard	3	6.903-999.0	For the removal of stubborn dirt outdoors	□
<b>SIDE BRUSHES</b>				
<b>Standard side brushes</b>				
Side broom standard for replacement	4	2.644-447.0	Standard side brush with moisture-proof universal bristles for normal soiling on all surfaces. Extremely durable.	■
<b>MISCELLANEOUS</b>				
Set side strip cpl.	5	2.644-436.0		■
Skirting sweep tank	6	5.030-124.0		■
Rear skirting	7	5.032-334.0		■
<b>OTHER ACCESSORIES SCRUBBER DRIERS</b>				
<b>Home Base accessories</b>				
Homebase accessory bag	8	5.032-196.0	Additional cleaning equipment can be quite easily and conveniently stowed in the accessory bag on the push handle.	□
ABS litter picker set	9	2.640-908.0	For picking up refuse.	□
<b>TROLLEYS &amp; BUCKET SYSTEMS</b>				
<b>Storage</b>				
Bucket 15 L	10	2.855-249.0	The large bucket with 15-l capacity is ideal for the bucket cleaning method.	□

■ Included in the scope of supply. □ Available accessories.